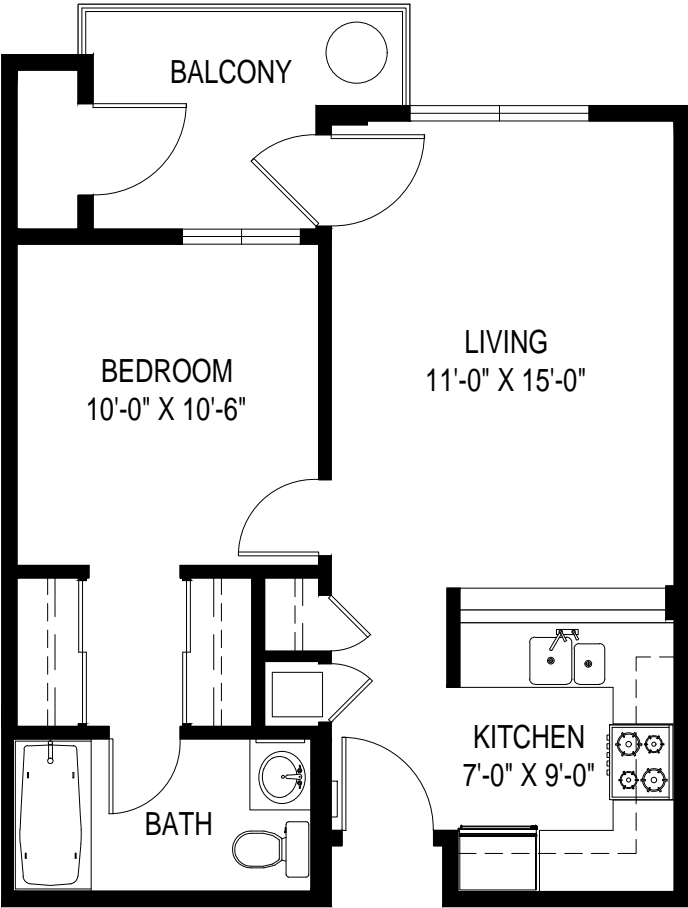

BELCOURT SENIOR APARTMENTS

12801 E. ROSECRANS AVE. NORWALK, CA 90650



LAYOUT B: 1 BED / 1 BATH

*ROOM SIZES ARE APPROXIMATE AND FOR REFERENCE ONLY

510 SF
(EXCLUDES BALCONY)

Belcourt Senior Apartments

12801 E. Rosecrans Ave.
 Norwalk, CA 90650

Apartment: Unit #222 (Layout B: 1 Bed / 1 Bath)

Room Number	Room Name	Approx. Room Dimension	Area (SF)	Flooring (SF)	Flooring (SY)	Cove / Wall Base (LF)
200	Entry	3'-10" x 8'-0"	(See Kitchen)	(See Kitchen)	(See Kitchen)	(See Kitchen)
201	FAU	1'-9" x 2'-2"	5	5	0.56	6
202	Bathroom	9'-9" x 5'-0"	50	32	3.56	23
203	Closet 1	2'-0" x 5'-0"	11	11	1.22	9
204	Closet 2	1'-9" x 2'-5"	5	5	0.56	7
205	Closet 3	2'-0" x 5'-0"	11	11	1.22	9
206	Bedroom	9'-11" x 10'-7"	124	124	13.78	39
207	Closet (Outdoor) 4	2'-0" x 5'-3"	12	12	1.33	13
208	Balcony	7'-7" x 7'-2"	67	67	7.44	N/A
209	Living	11'-3" x 15'-3"	179	179	19.89	51
210	Kitchen	7'-5" x 8'-9"	96	68	7.56	38
Total Material*			481	514	57.11	195
Total Unit Area**			510			

*SF calcs are approximate based upon a single typical unit measured; must be verified in field. Flooring SF/SY/LF is for reference and does not include overage based upon material.

**Unit Area excludes patio, balconies etc.. and includes interior walls.

Room sizes are approximate and for reference only.