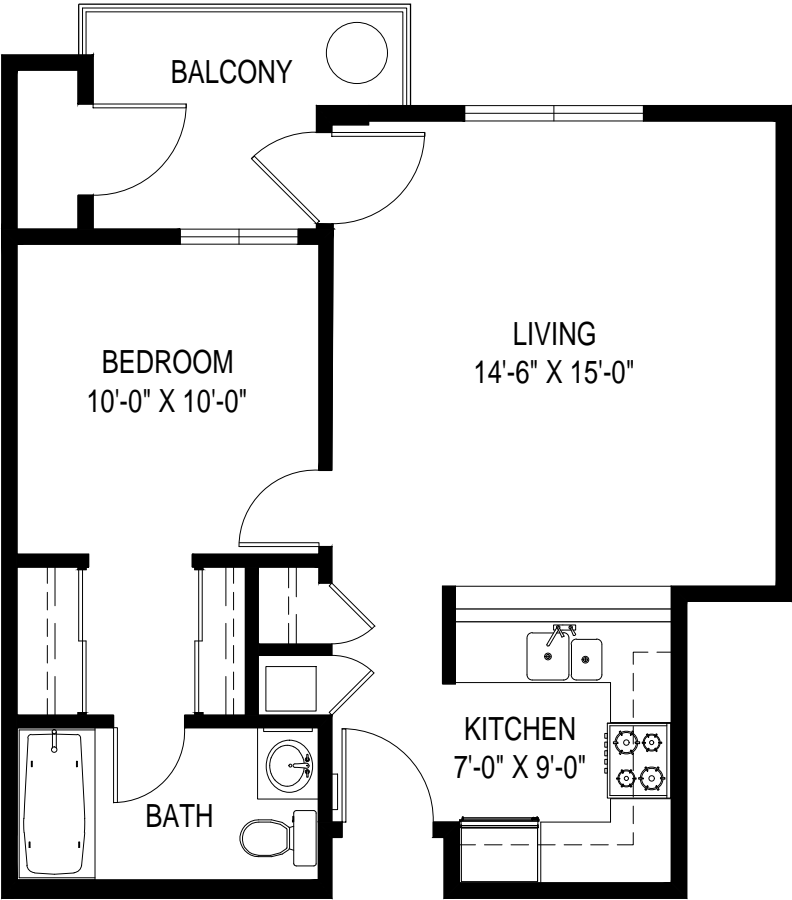


---

# BELCOURT SENIOR APARTMENTS

12801 E. ROSECRANS AVE. NORWALK, CA 90650



---

## LAYOUT C: 1 BED / 1 BATH

\*ROOM SIZES ARE APPROXIMATE AND FOR REFERENCE ONLY

**554 SF**  
(EXCLUDES BALCONY)

---

**Belcourt Senior Apartments**

12801 E. Rosecrans Ave.  
 Norwalk, CA 90650

**Apartment: Unit #362 (Layout C: 1 Bed / 1 Bath)**

Room Number	Room Name	Approx. Room Dimension	Area (SF)	Flooring (SF)	Flooring (SY)	Cove / Wall Base (LF)
300	Entry	3'-8" x 7'-9"	(See Kitchen)	(See Kitchen)	(See Kitchen)	(See Kitchen)
301	FAU	2'-0" x 2'-0"	5	5	0.56	6
302	Bathroom	9'-11" x 5'-0"	51	33	3.67	23
303	Closet 1	1'-6" x 4'-11"	8	8	0.89	8
304	Closet 2	2'-0" x 2'-4"	6	6	0.67	8
305	Closet 3	2'-0" x 4'-11"	11	11	1.22	9
306	Bedroom	9'-11" x 10'-2"	122	122	13.56	39
307	Closet (Outdoor) 4	2'-0" x 5'-3"	12	12	1.33	13
308	Balcony	7'-4" x 7'-0"	67	67	7.44	N/A
309	Living	14'-7" x 15'-3"	229	229	25.44	54
310	Kitchen	7'-1" x 8'-6"	93	66	7.33	34
<b>Total Material*</b>			<b>525</b>	<b>559</b>	<b>62.11</b>	<b>194</b>
<b>Total Unit Area**</b>			<b>554</b>			

\*SF calcs are approximate based upon a single typical unit measured; must be verified in field. Flooring SF/SY/LF is for reference and does not include overage based upon material.

\*\*Unit Area excludes patio, balconies etc.. and includes interior walls.

Room sizes are approximate and for reference only.