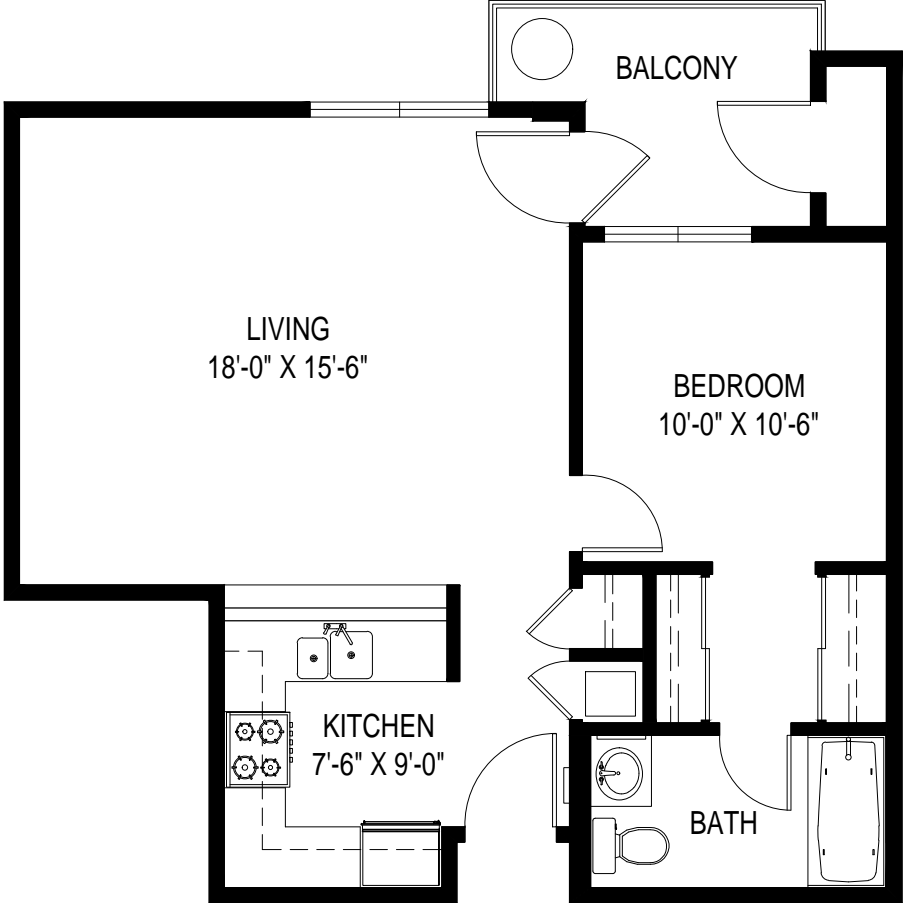


---

# BELCOURT SENIOR APARTMENTS

12801 E. ROSECRANS AVE. NORWALK, CA 90650



---

## LAYOUT D: 1 BED / 1 BATH

\*ROOM SIZES ARE APPROXIMATE AND FOR REFERENCE ONLY

**618 SF**  
(EXCLUDES BALCONY)

---

Miracle Mile Properties  
 4221 Wilshire Blvd.  
 Suite 480  
 Los Angeles, CA 90010

## Belcourt Senior Apartments

12801 E. Rosecrans Ave.  
 Norwalk, CA 90650

### Apartment: Unit #372 (Layout D: 1 Bed / 1 Bath)

Room Number	Room Name	Approx. Room Dimension	Area (SF)	Flooring (SF)	Flooring (SY)	Cove / Wall Base (LF)
300	Entry	3'-8" x 7'-11"	(See Kitchen)	(See Kitchen)	(See Kitchen)	(See Kitchen)
301	Kitchen	7'-4" x 8'-9"	97	68	7.56	34
302	Living	18'-1" x 15'-4"	284	284	31.56	61
303	Balcony	7'-5" x 7'-4"	78	78	8.67	N/A
304	Closet (Outdoor) 1	2'-0" x 5'-3"	12	12	1.33	13
305	Bedroom	10'-0" x 10'-6"	126	126	14.00	39
306	Closet 2	2'-0" x 4'-11"	11	11	1.22	9
307	Closet 3	2'-0" x 2'-6"	6	6	0.67	7
308	Closet 4	1'-9" x 4'-11"	8	8	0.89	8
309	Bathroom	9'-9" x 5'-0"	50	32	3.56	23
310	FAU	2'-0" x 2'-0"	5	5	0.56	7
<b>Total Material*</b>			<b>587</b>	<b>630</b>	<b>70.00</b>	<b>201</b>
<b>Total Unit Area**</b>			<b>618</b>			

\*SF calcs are approximate based upon a single typical unit measured; must be verified in field. Flooring SF/SY/LF is for reference and does not include overage based upon material.

\*\*Unit Area excludes patio, balconies etc.. and includes interior walls.

Room sizes are approximate and for reference only.