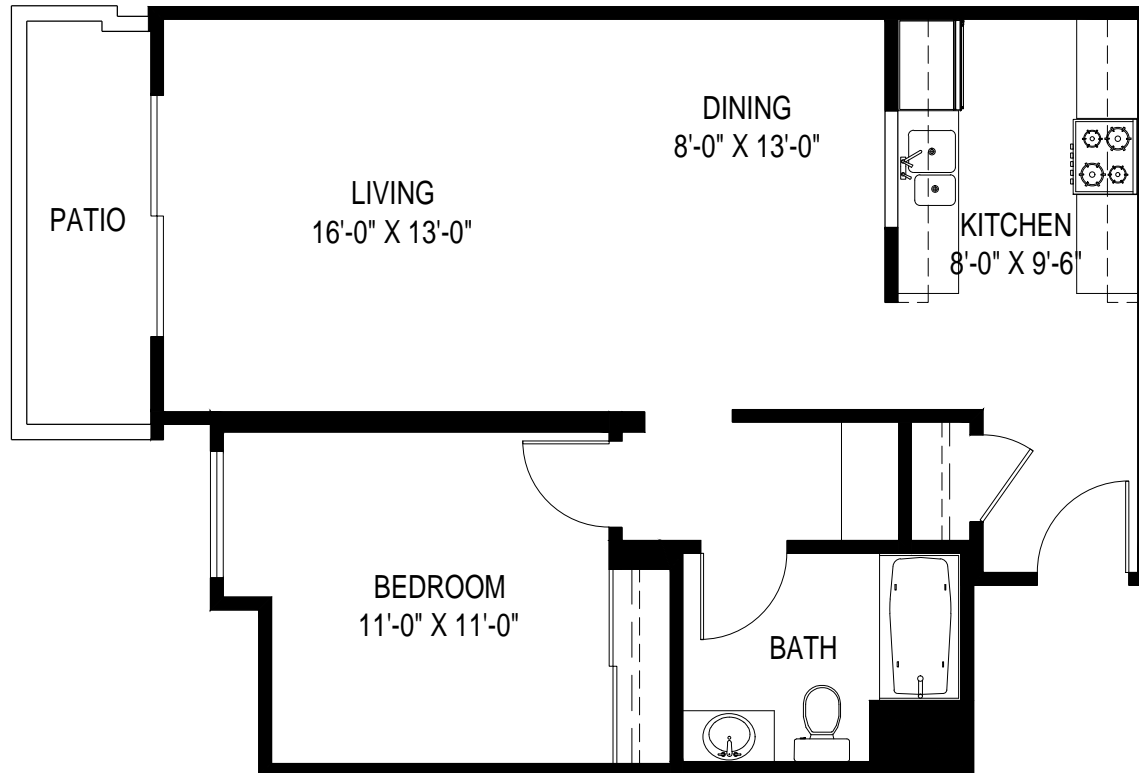


---

# VILLA VINCENNES APARTMENTS

14611 VICENNES ST. PANORAMA CITY, CA 91402



---

**LAYOUT D: 1 BED / 1 BATH**

\*ROOM SIZES ARE APPROXIMATE AND FOR REFERENCE ONLY

**722 SF**  
(EXCLUDES PATIO)

---

## Villa Vincennes Apartments

14611 Vincennes St.  
 Panorama City, CA 91402

### Apartment: Unit #119 (Layout D: 1 Bed / 1 Bath)

Room Number	Room Name	Approx. Room Dimension	Area (SF)	Flooring (SF)	Flooring (SY)	Cove / Wall Base (LF)
100	Entry	5'-1" x 8'-11"	57	57	6.33	21
101	Bathroom	9'-2" x 6'-10"	57	39	4.33	25
102	Closet 1	1'-11" x 6'-5"	12	12	1.33	10
103	Bedroom	11'-3" x 10'-11"	131	131	14.56	40
104	Patio	Varies	Varies	Varies	Varies	N/A
105	Living	16'-0" x 12'-11"	308	308	34.22	63
106	Dining	7'-8" x 12'-11"	(See Living)	(See Living)	(See Living)	(See Living)
107	Kitchen	7'-11" x 9'-4"	74	49	5.44	35
108	Closet 2	1'-11" x 3'-11"	8	8	0.89	10
109	Hallway	9'-1" x 3'-11"	37	37	4.11	21
<b>Total Material*</b>			<b>684</b>	<b>641</b>	<b>71.22</b>	<b>225</b>
<b>Total Unit Area**</b>			<b>722</b>			

\*SF calcs are approximate based upon a single typical unit measured; must be verified in field. Flooring SF/SY/LF is for reference and does not include overage based upon material.

\*\*Unit Area excludes patio, balconies etc.. and includes interior walls.

Room sizes are approximate and for reference only.